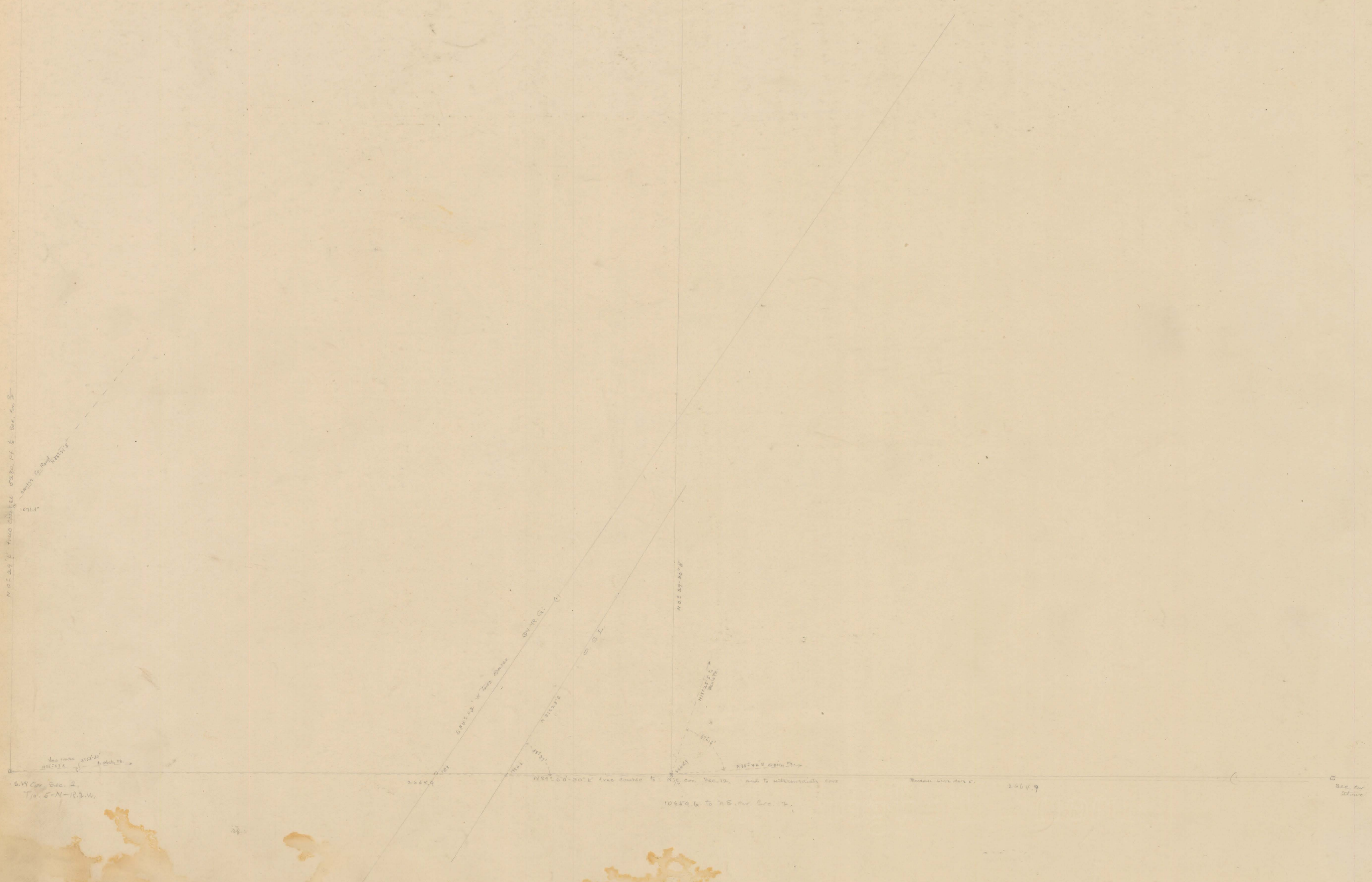


(58a.)

N 0° 29' 17" true course 5280.11 6 Sec. 10 S

10714'

S.W. Cor. Sec. 2.
Twp. 5-N-18-W.



S 84° 13' 12" true course 3000.00

N 12° 54' 30" true course 6

10659.6 to N.E. cor. Sec. 12.

2664.9

Sec. 10

5/4 of Sec. 2, Twp. 5-N-18-W. Scale 200 Ft. = 1 inch.